

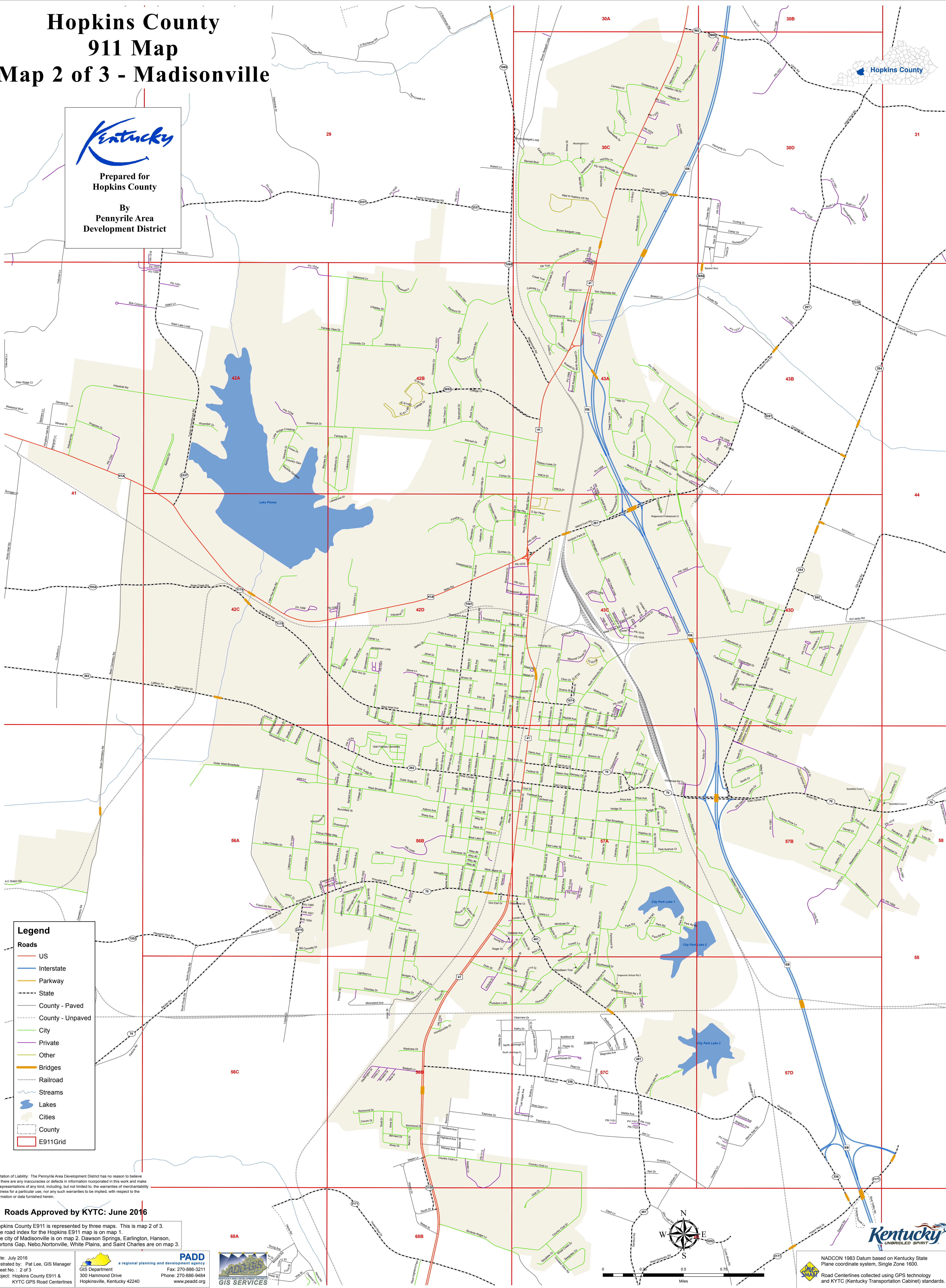
# Hopkins County 911 Map Map 2 of 3 - Madisonville



**Kentucky**

Prepared for  
**Hopkins County**

By  
**Pennyriple Area  
Development District**



**Legend**

**Roads**

- US
- Interstate
- Parkway
- State
- County - Paved
- County - Unpaved
- City
- Private
- Other
- Bridges
- Railroad
- Streams
- Lakes
- Cities
- County
- E911Grid

Limitation of Liability: The Pennyriple Area Development District has no reason to believe that there are any inaccuracies or defects in information incorporated in this work and make no representations of any kind, including, but not limited to, the warranties of merchantability or fitness for a particular use, nor any such warranties to be implied, with respect to the information or data furnished herein.

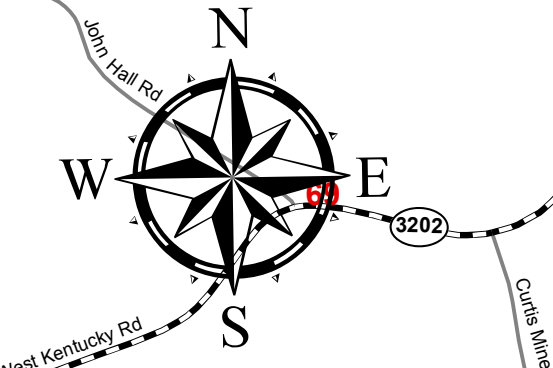
**Roads Approved by KYTC: June 2016**

Hopkins County E911 is represented by THREE maps. This is map 2 of 3. The road index for the Hopkins E911 map is on map 1. The city of Madisonville is on map 2. Dawson Springs, Earlington, Hanson, Mortons Gap, Nebo, Nortonville, White Plains, and Saint Charles are on map 3.

Date: July 2016  
 Illustrated by: Pat Lee, GIS Manager  
 Sheet No. 2 of 3  
 Project: Hopkins County E911 & KYTC GPS Road Centerlines

**PADD**  
 a regional planning and development agency  
 GIS Department  
 300 Hammond Drive  
 Hopkinsville, Kentucky 42240  
 Phone: 270-886-3211  
 Fax: 270-886-3211  
 www.padd.org

**GIS SERVICES**



**Kentucky**  
UNBRIDLED SPIRIT

NADCON 1983 Datum based on Kentucky State Plane coordinate system, Single Zone 1600.  
 Road Centerlines collected using GPS technology and KYTC (Kentucky Transportation Cabinet) standards.