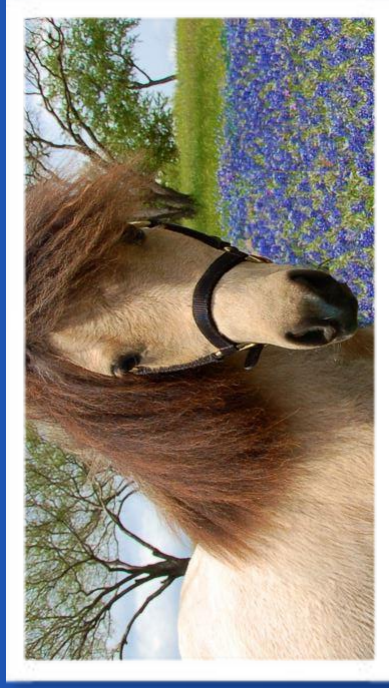


Intimacy from the Inside Out Basic Couples Course

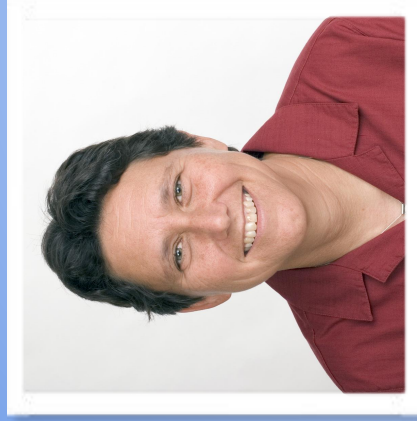
Austin, TX

Two 5-day training blocks:
September 21-25 & Nov. 30 - Dec. 4
2018

This is a 72-hour intensive training program based on Internal Family Systems therapy that teaches IFS therapists to deepen their knowledge and skill for facilitating relational work with couples and individuals.



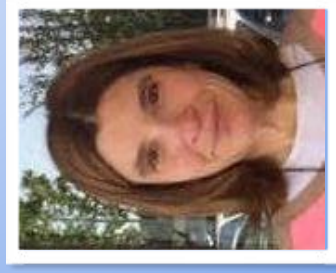
*Intimacy from the Inside Out
is a level two offering from
The Center for Self Leadership*



Cathy Curtis, LCSW
Lead Trainer - Week 1



**Toni Herbine-Blank,
MS, RN**
Lead Trainer - Week 2



Judi Zoldan, LICSW
Assistant Trainer - Week 1 & 2

Register online at
www.toniherbineblank.com
Go to *Trainings*

To confirm your spot, fill out the
online application and pay the
\$300.00
nonrefundable deposit

For more information contact
Kristi Good at
intimacyinsideout@gmail.com
or Toni at
toni@toniherbineblank.com

For special requests (per ADA) contact
Sallie Ingle at 512-576-1604 or
sallie@lakewaycounselingcenter.com

Paying for the training
\$300 due upon registration
\$1175 due by March 21, 2018
\$1175 due by June 21, 2018
Cancellation Policy
Deposit and all other
payments are nonrefundable

Location: Wind Horse Hill
6492 Fall Creek Road
Spicewood, TX

Schedule: Sept. 21-25, 2018 &
Nov.30 - Dec.4, 2018

Fri - Mon 9:30am - 6:30pm
Tues 9:30am - 5:30pm

Tuition: \$2650
(does not include room & board)

Continuing education contact
hours offered: 72.00 hours

Instructional Methodology:
Lecture, demonstration,
audio/visual, experiential practice
of techniques, large and small
group discussion.

Skill Level: This training is
appropriate for for IFS Level 1
trained therapists.

Continuing education credit for this training is co-sponsored by Toni Herbine-blank, MS, RN, CS-P, and *The Institute for Continuing Education*. Continuing education credit is offered as listed below. The training offers a total of 72.00 contact hours (36.00 hours per session), with full attendance required. The CE processing fee is \$60 per person. Application forms will be available on site. CE verification is mailed to attendees following completion of each session of the training. To receive CE credit, attendees must complete CE materials, sign-in/out daily, and complete an evaluation of the training. If you have questions regarding continuing education, the program, grievance issues, or for a listing of learning objectives for sessions, contact *The Institute* at 251-990-5030 or at instconted@aol.com

Psychology: The Institute for Continuing Education is by the American Psychological Association (APA) to sponsor continuing education for psychologists. The Institute for Continuing Education maintains responsibility for this program and its content.

Counseling: For counselors seeking credit, The Institute for Continuing Education will submit a co-sponsorship application to NBCC for this program.

Social Work: The Institute for Continuing Education, Provider 1007, is approved as a provider for social work continuing education by the Association of Social Work Boards (ASWB), www.aswb.org, through the Approved Continuing Education (ACE) program. The Institute for Continuing Education maintains responsibility for the program. ASWB Approval Period: 4-13-2018 to 4-13-21. Social workers should contact their regulatory board to determine course approval.

Marriage/Family Therapy: The Institute for Continuing Education is recognized as a provider of continuing education by the Texas Board of Marriage/Family Therapy. Provider 177.